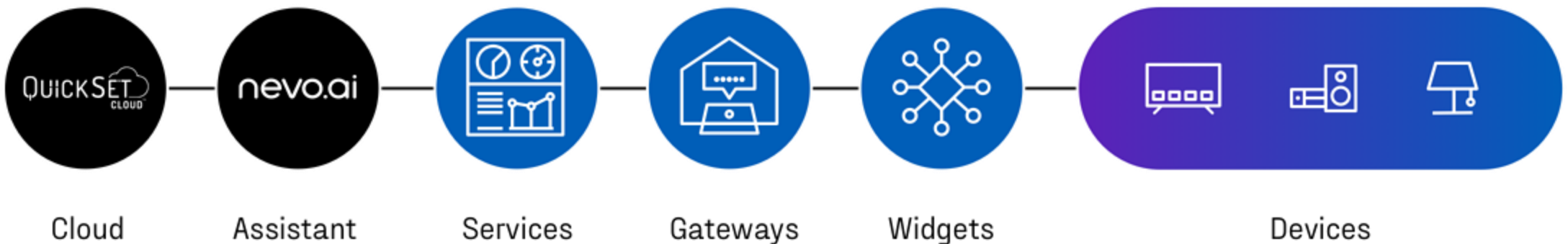


---

# Nevo Butler

# The Nevo Platform

*The Nevo Platform is the white label End-to-End smart home and entertainment control solution from UEI. It consist of our QuickSet Cloud, nevo.ai, services, gateways, widgets and devices that seamlessly work together as one system.*



A MATTER CERTIFIED SOFTWARE COMPONENT

# QuickSet Cloud

The brain of our platform is called QuickSet Cloud and it allows the system to discover, interact, and control virtually any electronic device or service in the home.



QuickSet is a certified Software Component enabling our customers to discover, onboard and interact with Matter devices

# Digital Assistant

The user interface of the platform is our digital assistant, nevo.ai. She is an intelligent multimodal interface which interacts with the user over voice, graphical, and tactile interfaces.



nevo.ai

## Conversational Interface



text



listens



speech

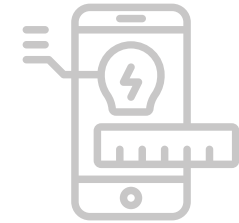


nevo.ai

## Graphical Interface



on TV



on Mobile



Device Status



Control Devices



Launch Channels



Launch Apps



Content Interaction



Setup Devices



EPG



Discover  
Devices & Services



Troubleshooting



Alerts & Notifications

# Software Services

Leveraging our cloud and digital assistant, the Nevo Platform offers multiple truly unique discovery, control, and support services



# Services

## Butler Gateway

The Nevo Platform can run on virtually any internet connected OEM device, but presents itself in its purest form on our highly secured, voice-enabled, white label gateway, Nevo Butler.



# Gateway



# Widgets

Our solution allows products to interact with many of today's connected and legacy electronic devices in the home, especially if powered by our connected wireless modules called QuickSet® Widgets.



## Wireless modules

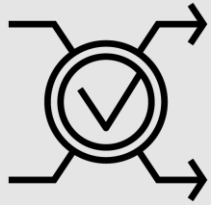
## Devices

To complete our end-to-end system, Universal Electronics develops many white label IoT devices such as Zigbee sensors or thermostats. We also certify third party IoT devices via our Works With QuickSet<sup>®</sup> program.



## End-to-End Solution

## Built-in services



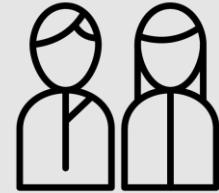
- Interoperability as a Service
- Support infrastructure (including device management and OTA)
- Data insights
- Device discovery and fingerprinting
- Device control

## Enterprise integration services



- EPG integration
- CRM system integration
- Voice integration

## Partner services

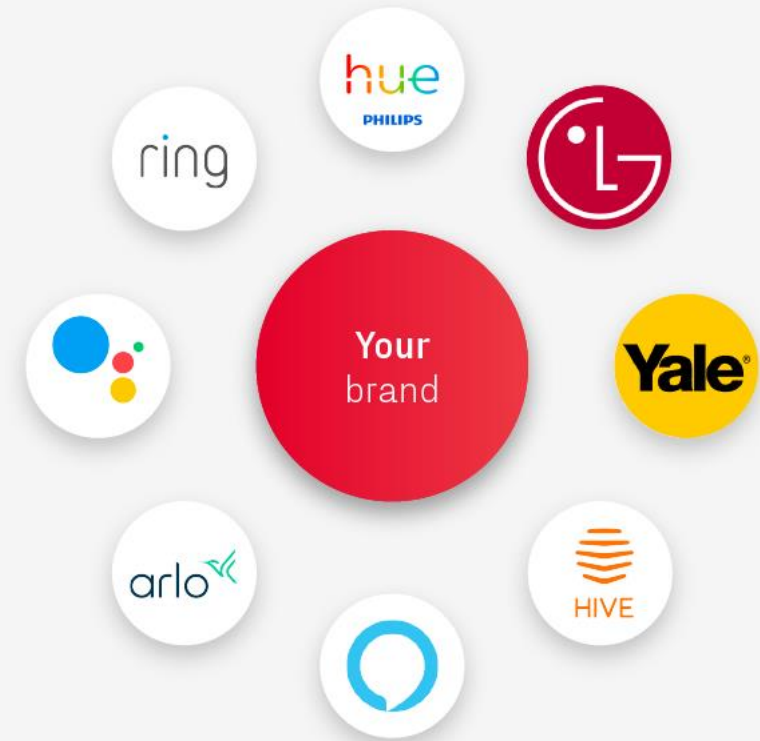


- Food delivery
- Cyber security
- Ride sharing

COMPATIBILITY WITH DEVICES AT HOME IS  
THE NUMBER ONE DRIVER FOR PRODUCT PURCHASES

# Interoperability as a Service

- Addresses both consumers' needs as well as manufacturers' challenges as a service
- Ensures the product is compatible with what consumers have in their home – current control systems whether it be an existing hub, smart speaker, or automation platform as well as those Powered by QuickSet®
- With Matter Certification, QuickSet's interoperability is now extended to all Matter Capable devices irrespective of brand and type!

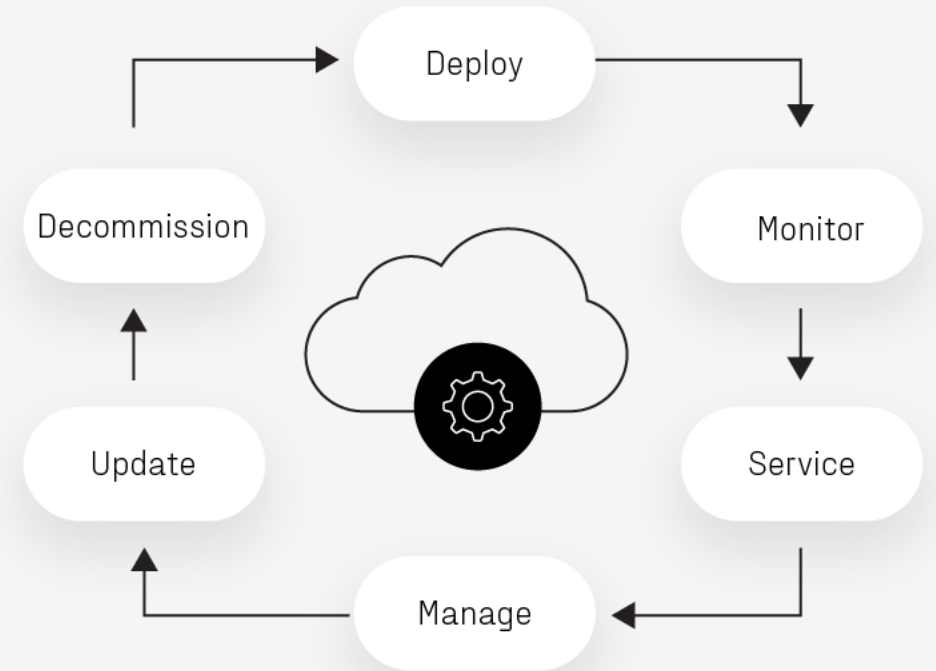


## Interoperability service

DEVICE MANAGEMENT TOOLS AND FRAMEWORK  
FOR MONITORING DEVICE FLEET HEALTH AND STATUS

# Device Management

- A full-featured device management system in the cloud
- Powerful dashboard for managing device virtualization, templates, properties, rules and schedules
- Connectivity protocol agnostic framework supports Zigbee, BLE, sub-GHz, IP, Zigbee RF4CE and cellular to edge device
- Mobile SDK for easy mobile app development and testing



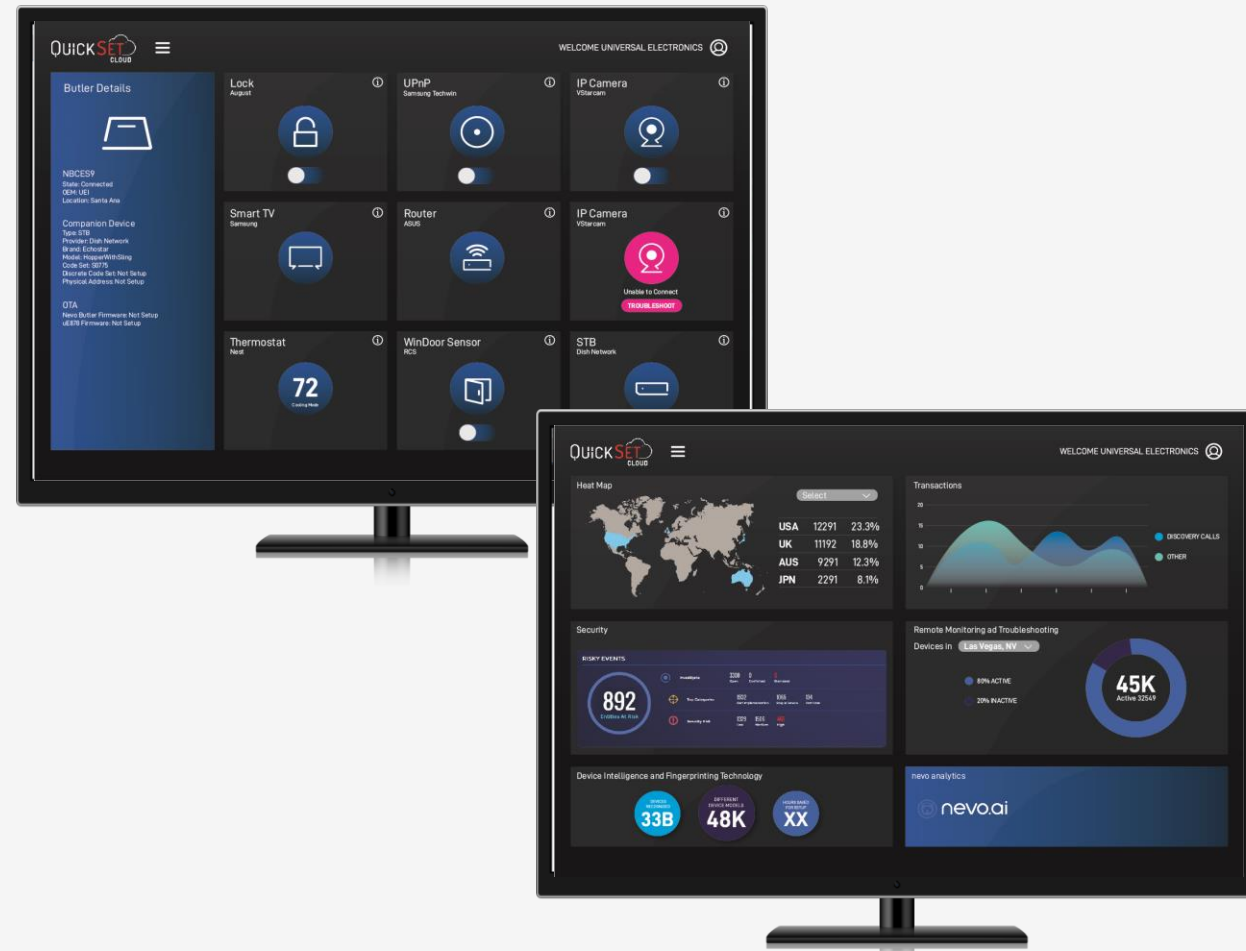
## Device management service

## QUICKSET SERVICES

FOR QUICKSET INTEGRATED SMART MODULE, SILICON,  
QS SMART THERMOSTAT AND QS 5.0 ENABLED DEVICES

# Device Dashboard

- Direct and simple access to display of devices and associated status can be used for further personalization opportunities, advanced troubleshooting
- Remote device management through graphical interface
- Remotely monitor and execute actions for troubleshooting



# Remote access and troubleshooting

BUILT AROUND AN OPEN-ENDED KNOWLEDGE BASE

# Virtual Agent

- Enabling self-help capabilities on common questions around
  - Setup
  - Feature discovery
  - Troubleshooting
- To keeps users in the branded experience it can be easily integrated
  - On-device (TV, set-top box, thermostat, remote, etc.)
  - On a support website
  - In mobile apps

When combined with QuickSet it is enhanced with the knowledge of existing devices in the home including real-time access to secure remote troubleshooting features.



## Virtual Agent service

DATA INSIGHT CRITICAL FOR PRODUCT FEATURE,  
PRODUCT USAGE ASSESSMENT

# Data Insights

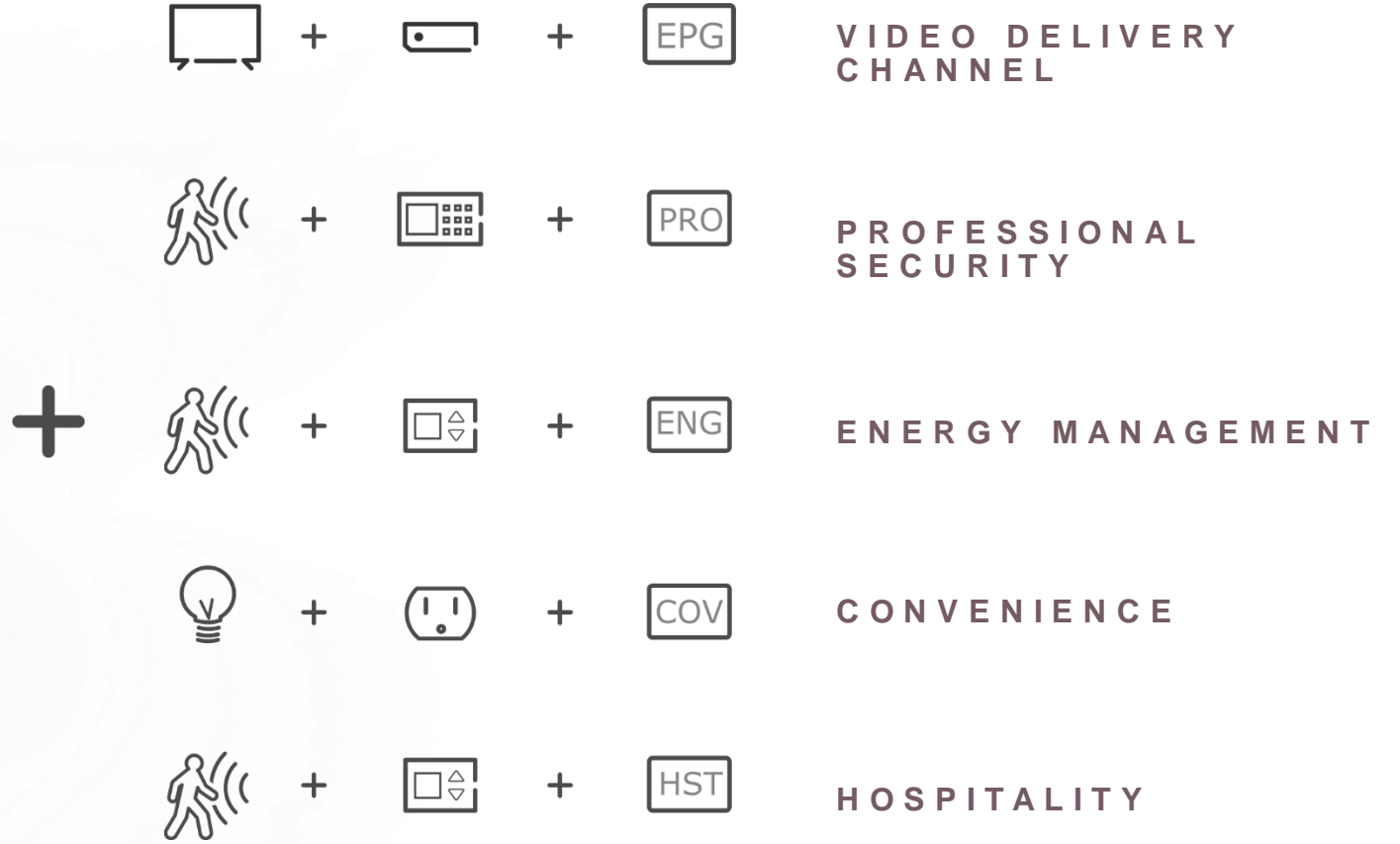
- Provides insights for customer on device ownership, usage and user behavior
  - Device: model/make, year, capabilities
  - Network: inputs, active usage, other devices
  - Services: downloaded apps, app usage
- Predicting and reducing customer support
  - Understanding means predicting customer support (especially on CPE installation)
  - Understanding where customer is watching streaming services (which device, how often, etc.)



## QuickSet Cloud Data Insights



# Customize Nevo Butler for your application



Thank  
You!

